

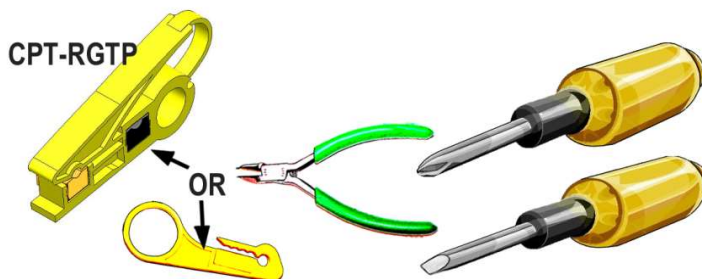
# Shielded ZMAX Keystone Panel Instructions



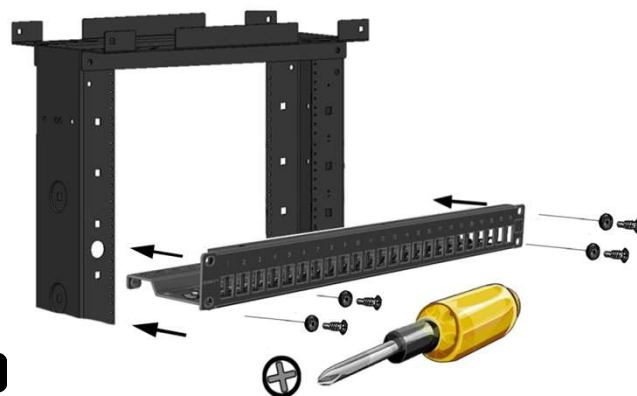
KPNLS-F1-24-01S



KPNLS-A1-24-01S



Tools

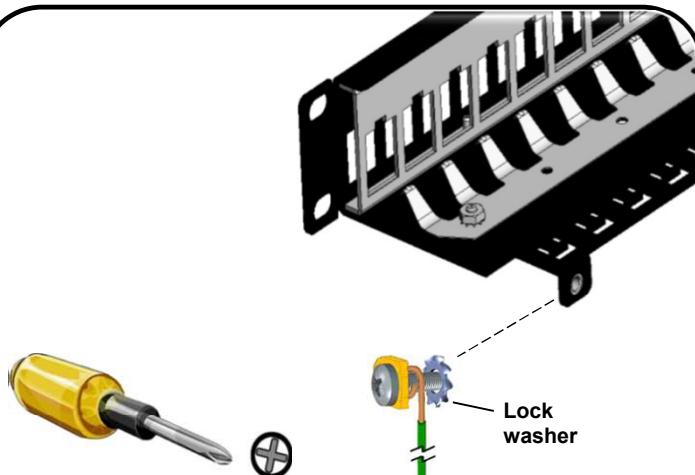


1



Reference Shielded ZMAX module termination instructions

3

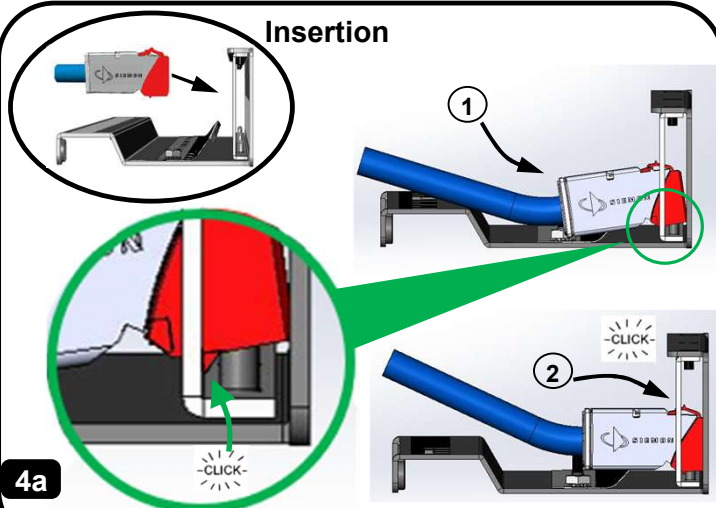


Lock washer  
#12 AWG (min.)\*  
Solid or Stranded

2

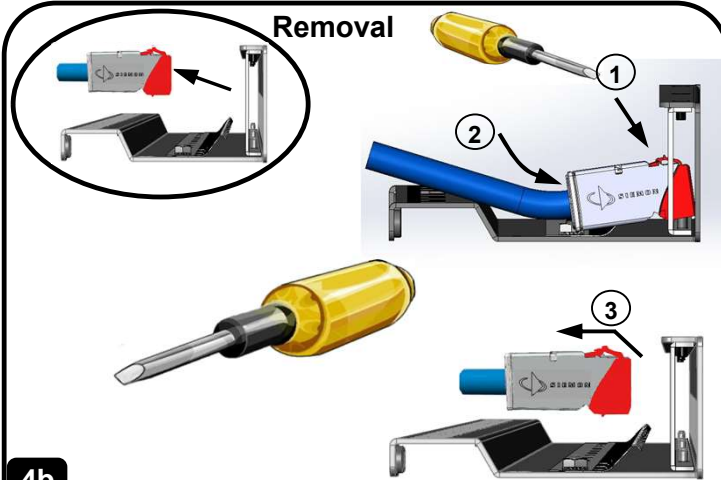
\* Unless otherwise specified by local codes and regulations

## Insertion



4a

## Removal

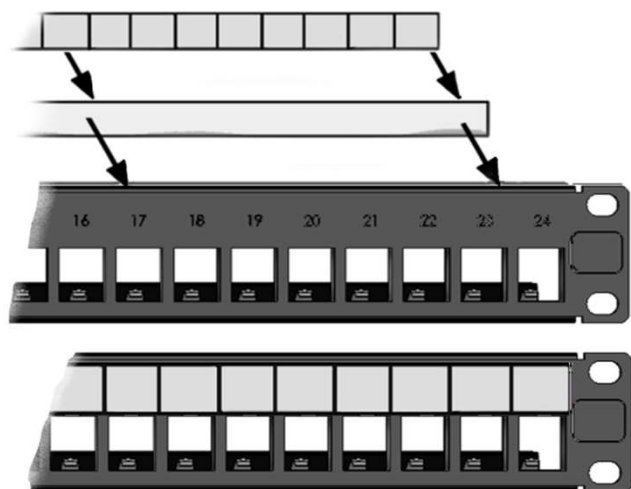


4b



# Shielded ZMAX Keystone Panel Instructions

## Optional Labeling



5

### Comply with the following for safe installations:

- A. Use caution when installing or modifying telecommunications circuits.
- B. Never touch uninsulated wire terminals unless the circuit has been disconnected.
- C. Never install this device in a wet location.
- D. Never install wiring during a lightning storm.

To ensure you have the latest revision to this document,  
please visit: <http://www.siemon.com/us>

**Global Headquarters**  
Watertown, Connecticut USA  
Tel: (1) 866-548-5814

For a complete listing of our global offices visit our web  
site



[www.siemon.com](http://www.siemon.com)

Rev. A 3/22 100.28157.00

© 2022 Siemon