



UltraMAX™

Move Beyond Convention



The Siemon UltraMAX copper connectivity system blends usability, quality, and performance within a single platform ideal for your category 5e, 6 and 6A UTP deployments. UltraMAX outlets maximize usability, quality and performance into a sleek footprint that's ideally suited for users to deliver quick, reliable terminations the first time, every time. UltraMAX patch panels maximize functionality, aesthetics and industry-leading performance into a format that will allow users to configure their ideal system.



THE NEXT EVOLUTION IN CATEGORY 5E, 6, AND 6A UTP CONNECTIVITY



Engineered with Industry-Leading Innovation

As a leader in copper connectivity, Siemon designed UltraMAX with a fresh perspective, simplifying our existing ranges into a new, unified footprint — taking the categories you know to a new level of excellence.

Packed with Intuitive, Time-Saving Benefits

With fast, consistent terminations and flexible mounting options, UltraMAX reduces installation time by 20% and avoids costly re-works, allowing any skill level to reliably terminate critical connections with ease.

Multiple Options to Suit Your Specific Needs

UltraMAX includes multiple outlet styles that can be terminated with your tool of choice and a full line of flat and angled patch panels that let you configure and install systems ideally suited to your needs.

ULTRAMAX DELIVERS



Fast Installation

UltraMAX components are designed to simplify and speed deployments.



Superior Flexibility

A wide range of work area, termination, and patching options meet any installation preference.



Flawless Aesthetics

Stylish outlets and scratch-resistant patch panels provide a sleek, seamless look.



1. Cost-Effective Performance

Meets all category 5e, 6, and 6A UTP industry standards in a single platform that streamlines manufacturing to meet demand and simplify inventory.



2. Versatile, Slimline Design

All UltraMAX outlets are available in hybrid, keystone and patch panel mounting styles, providing users with a range of options to suit various installation needs.



3. Reliable, Guided Terminations

Distinct linear lacing channels with a 2-sided color-coding guide to verify correct conductor placement, before and after lacing, ensuring reliability every time.



4. Easy on the Hands

Our helpful palm guard provides a trusted and secure option for both lacing and termination without discomfort.



5. Fast, Consistent Punch-Downs

Our innovative impact tool allows users to quickly terminate all 4 pairs in one action, within work areas and patch panels.



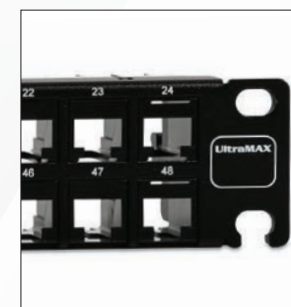
6. Adaptable Functionality

Flat and angled 24- and 48-port patch panels provide a common platform for all categories and are available empty, kitted, or fully loaded.



7. Configurable Work Areas

The hybrid bezel allows users to easily install outlets in a flat or angled orientation, while also providing a simple option for color-coding network connections.



8. High-Density

This option provides 48 ports in just 1U to decrease significant rack space utilization while still meeting strict Category 6A Alien Crosstalk Parameters.



IT'S THE CATEGORY YOU KNOW

BUT UNLIKE ANYTHING YOU'VE USED

“ UltraMAX is the culmination of Siemon's many years of copper connectivity innovation and has been made possible by our decades of design expertise and state-of-the-art process automation. The result is an intuitive, quality solution that allows our customers to deploy UTP copper systems quickly and efficiently to support the growing number and diversity of connected devices while remaining competitive in today's evolving marketplace. ”

— Mike Boisseau
Siemon's Business Leader for Copper Systems

THE ULTRAMAX COPPER CONNECTIVITY SYSTEM

UltraMAX offers a wide array of outlets, patch panels, and termination tools that allow users to support their unique category 5e, 6, and 6A UTP network deployments and installation preference. These components combine Siemon's pedigree of copper connectivity innovation and customer-first design, to address your challenges, remove the compromises and provide a single platform that delivers efficiencies across all lifecycle stages – from manufacturing and distribution to installation, maintenance and operation.

Outlets

UltraMAX outlets have a linear lacing design that enables termination from either side and ensures correct conductor placement for consistent, reliable terminations. The outlets come in hybrid, keystone, and patch panel mounting styles, with the hybrid style supporting both flat and angled orientation and easy color-coding.

Hybrid outlets can be mounted from the front or rear of a faceplate and the slimline design is ideal for tight-fitting environments. Each UltraMAX outlet also features Siemon's patented PowerGUARD® technology for superior PoE support.



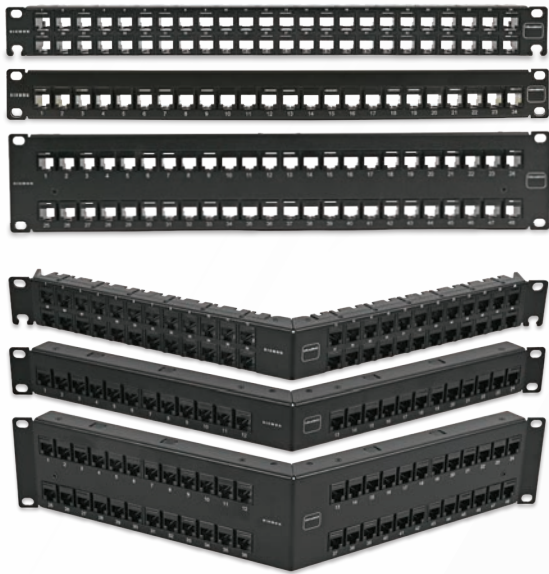
U (X or XX) - (X) (XX) (X) (X)

PERFORMANCE CATEGORY	MOUNTING STYLE	BEZEL COLOR		DOOR OPTION	PACKAGE TYPE
5 = 5e UTP 6 = 6 UTP 6A = 6A UTP	H = Hybrid Flat/Angled K = Keystone P = Panel	00 = No Color 01 = Black 02 = White 03 = Red 04 = Gray 05 = Yellow	06 = Blue 07 = Green 09 = Orange 20 = Ivory 80 = Light Ivory	N = No Door D = Door	S = Single Standard Pack B = Bulk Pack

Patch Panels

UltraMAX patch panels blend functionality, durability, and aesthetics with multiple options for configuring the ideal system. Available in 24- and 48-port 1U and 2U flat and angled versions, the panel features snap and release functionality that makes it easy to add or remove individual outlets, even in high-density environments.

Constructed from high-strength steel with an attractive scratch-resistant finish, UltraMAX patch panels have a removable rear cable manager and can be purchased empty, kitted with outlets, or fully loaded and ready for termination.



UP (X or XX) - (X) (X) - (XX) (X) - RS

PERFORMANCE CATEGORY	MOUNTING STYLE	RACK MOUNT SPACE	PORT COUNT	OUTLET CONFIGURATION
5 = 5e UTP 6 = 6 UTP 6A = 6A UTP N = Not Applicable	F = Flat A = Angled	1 = 1U 2 = 2U	24 = 24-Port 48 = 48-Port*	E = Empty K = Kitted L = Loaded

*48-port 1U panels are not compatible with UltraMAX 4-pair impact tool.

Termination Tools

The UltraMAX system includes a range of tools, designed to deliver fast, consistent terminations with multiple choices to suit your preference. Outlets can be terminated with a single position tool or in four quick and simple steps using the 4-pair impact tool that terminates and cuts all four pairs at once – at the work area or the patch panel.

The ergonomic palm guard is an ideal accessory for absorbing impacts and protecting user hands while punching down outlets.



4-Pair Impact Tool

Part Number	Description
UMAX-PD	UltraMAX 4-pair impact tool
UMAX-PD-H	UltraMAX 4-pair impact tool replacement head

Palm Guard

Part Number	Description
PG-2	UltraMAX palm guard with insert
PG2-U	UltraMAX palm guard insert only

BETTER VALUE, SAME SIEMON INNOVATION

Category 5e, 6 and 6A UTP copper connectivity is well established for network infrastructure, and Siemon has always been at the forefront of that innovation – from being first to market with category 6 in 1998 to the development of our best-in-class Z-MAX® category 6A UTP and shielded systems in 2009.

While category 6A is recommended for new installations and continues to gain market share, all three UTP performance levels comprise infrastructure across global enterprise spaces. With the volume and diversity of connected devices and systems being deployed, you need a platform that will support you for years to come. UltraMAX is that platform.

Built on Siemon's existing copper innovation with a fresh perspective on meeting the challenges of today and tomorrow, UltraMAX is ready to lead the way as our newest, most efficient UTP copper connectivity system.

- UltraMAX's common platform for category 5e, 6, and 6A UTP leverages Siemon's high degree of automation to reduce cost and ensure flexible capacity in evolving markets.
- UltraMAX replaces Siemon MAX® 5e and 6 UTP outlets while maintaining compatibility with our full range of MAX and keystone work area solutions.
- UltraMAX expands the capacity and cost-effectiveness of our category 6A UTP offering, while preserving the fast, consistent termination and easy installation you've come to know and value.
- UltraMAX replaces Siemon's HD®5 and HD®6 fully loaded patch panels with multiple options that work with any UltraMAX category level.
- UltraMAX includes eco-friendly packaging which is easily recycled in all global regions and is in line with our Siemon Sustainability Pledge to minimize all forms of waste.

“ UltraMAX made our work very simple, there are way fewer steps than typical panels and fewer steps are always good. We loved how the product dresses and it was very easy to terminate. UltraMAX is an exceptional new product from Siemon. ”

– Tony De Sousa & Irvon Patrick
Siemon Certified Installers from NIS (Network Installation Services, Inc)

START YOUR ULTRAMAX JOURNEY TODAY!



For more information visit:
www.siemon.com/ultramax



Find your local Siemon distributor:
go.siemon.com/distributor



24/7 Customer Support:
customer_service@siemon.com

www.siemon.com/ultramax

BRC_UltraMAX_RevB 12/22

